



FAMILY Cantharidae

GENUS *Absidia* / *Rhagonycha*

SPECIES *Absidia* sp. / *R. translucida*

Absidia sp.

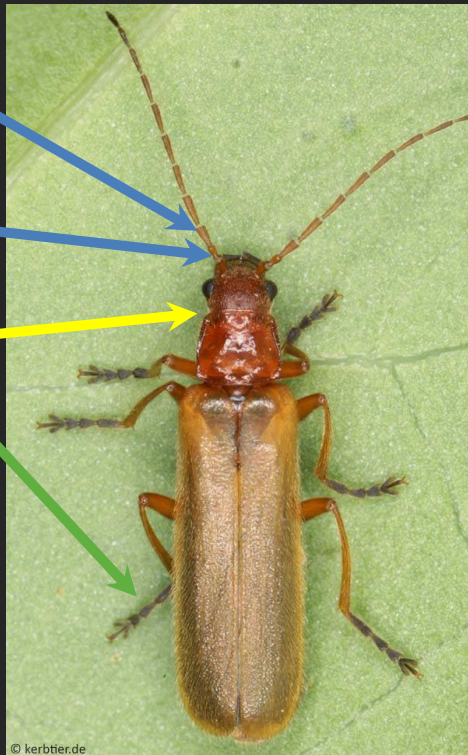
3rd antennae segment shorter than the following and slightly wider to the top

2nd short antennae segment not darker than first or 3rd

Front margin of the pronotum more or less straight

Tarsi darkened

Please note: Form of the head and eyes shown here is not a distinguishing feature. The beetle on the left is a female, the one on the right a male



© kerbtier.de

Absidia rufotestacea
Photo © Benisch

Rhagonycha translucida

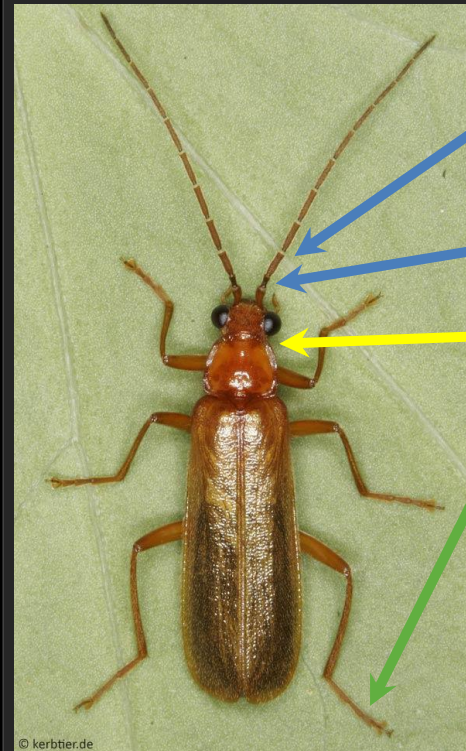
3rd antennae segment as long as the following and long and slender as the following

2nd short antennae segment usually clearly visible as darker than first or 3rd *

Front margin of the pronotum more rounded

Tarsi not darkened

* 3rd segment color a good hint for beetles from central European mountain ranges including the alps. Not suitable for beetles from the Balkan or the Caucasus Mountains



© kerbtier.de

Rhagonycha translucida
Photo © Benisch

Characteristics after H. Kliesch